

# Ultra-silent Smart Curtain Motor

- It uses Bluetooth 5.0 SIG Mesh technology that provides stable communication and reliable performance with its high networking capacity.
- Control it on your iOS or Android device via Bluetooth.
- Wide voltage design meets input voltage requirements worldwide.
- Motor will stop running automatically if it meets resistance, protecting the system.
- Manually pull the curtain to open or close it when the power is off.
- Ultra-silent & high-precision DC motor. Soft start and soft stop function makes it run more smoothly.
- When the power is on, gently pull the curtain 5 centimeters towards a direction so as to start the automated opening and closing.
- Work with a gateway to achieve the advanced functions, such as remote control, cloud scenes and automation.



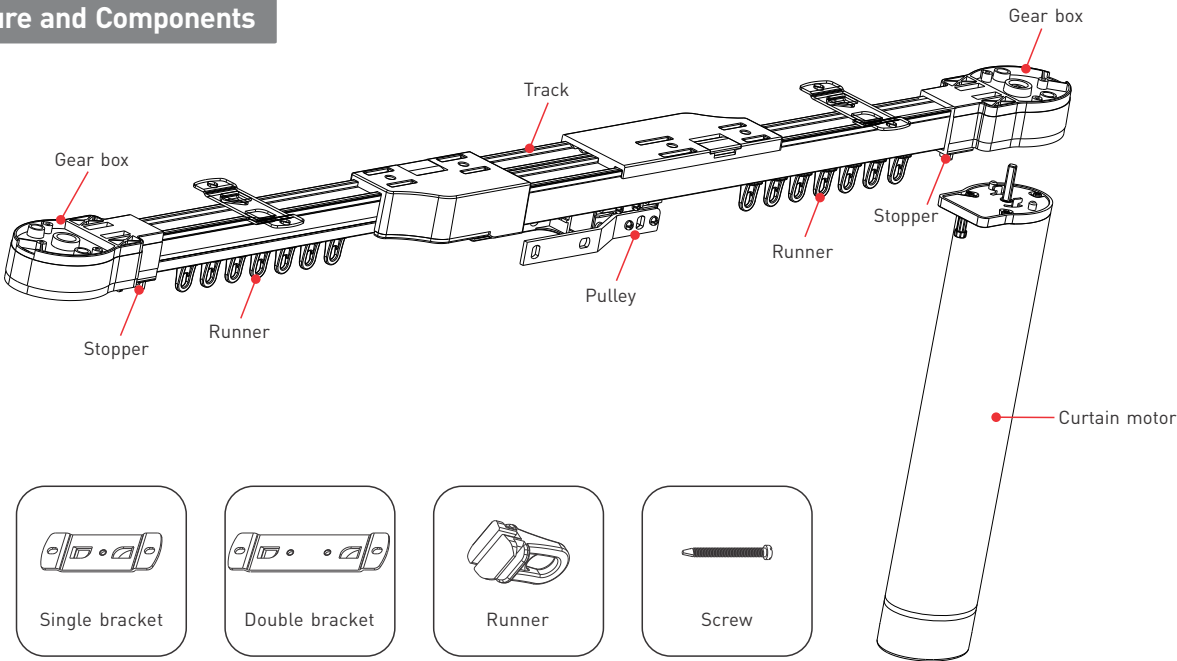
## Parameters

Product model	Rated torque	Running speed	Motor housing dimensions	Rated voltage	Rated power	IP rating
CG-CUR15	1.5Nm	14cm/s	310×68×50mm	100–240Vac 50/60Hz	65W	IP20

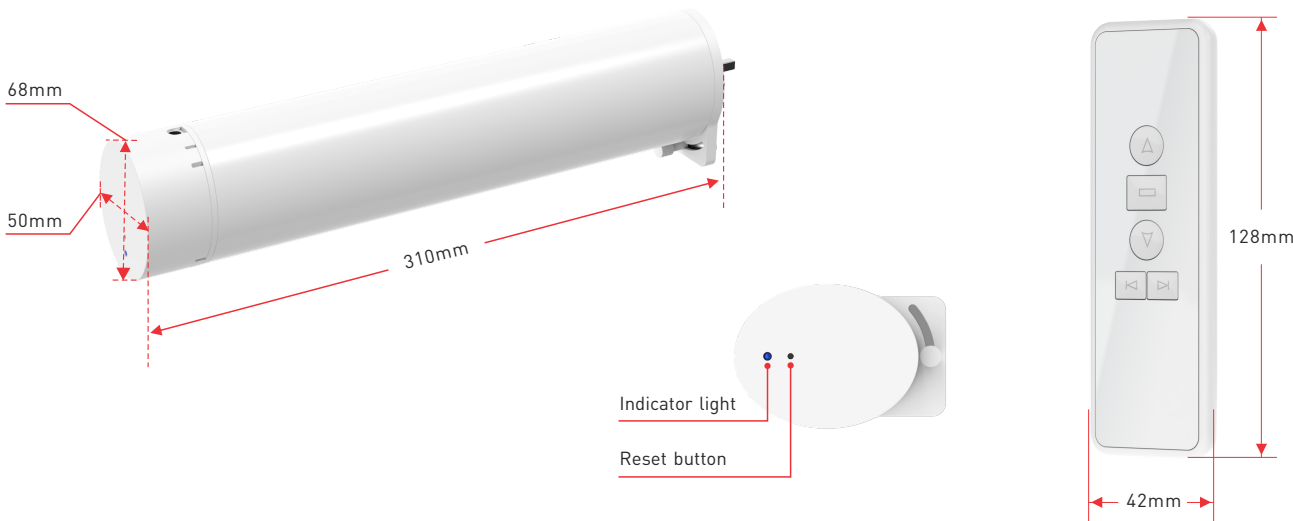
## Attached list: track load parameters

Curtain weight Track length	Type of curtain track	Two-way draw		One-way draw		Two-way draw		One-way draw	
4m		90kg	75kg	67.5kg	60kg	52.5kg	45kg	46.5kg	31.5kg
8m		82.5kg	67.5kg	60kg	52.5kg	45kg	37.5kg	31.5kg	24kg
12m		75kg	60kg	52.5kg	45kg	37.5kg	30kg		

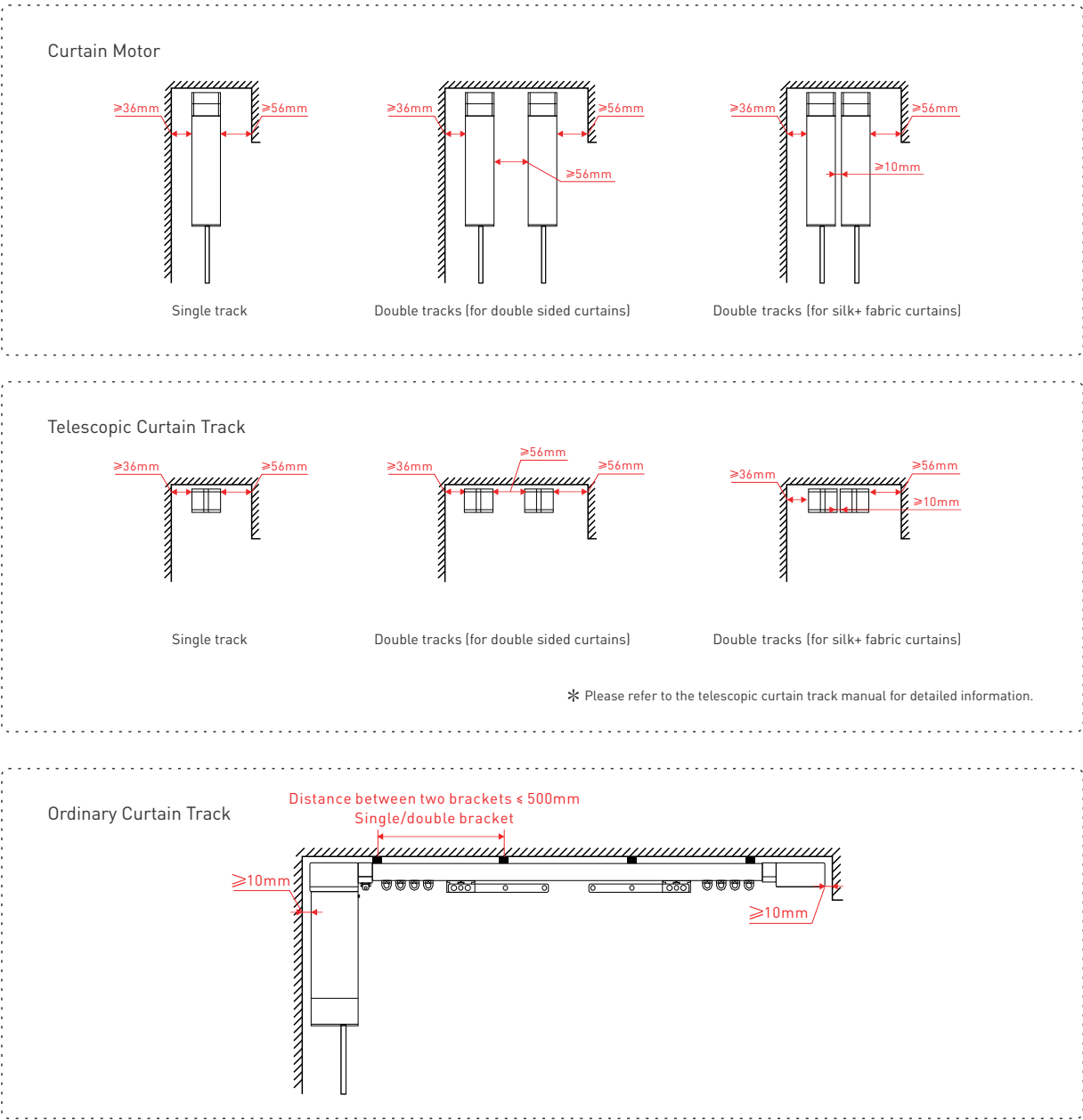
## Structure and Components



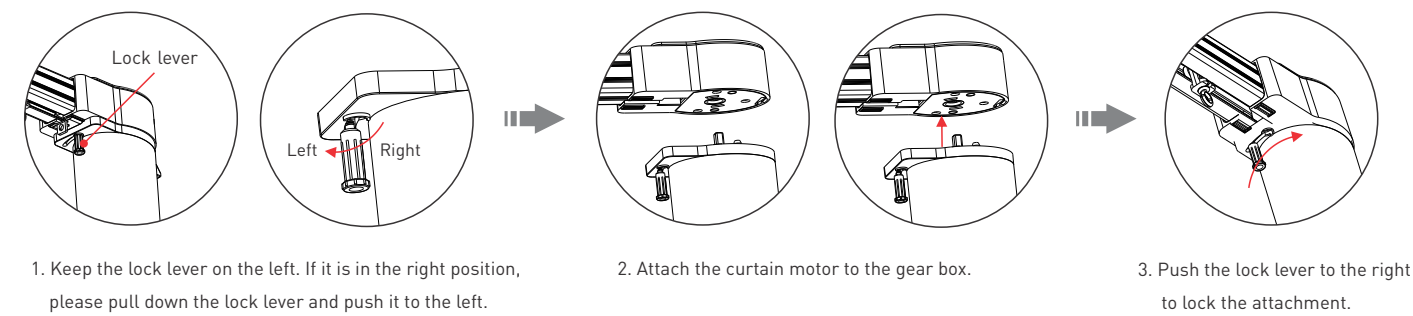
## Product Overview



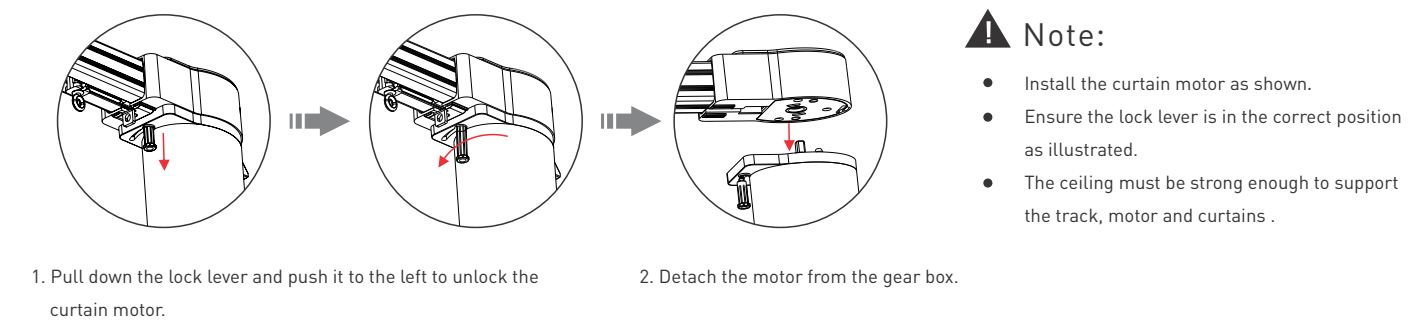
## Installation Distance



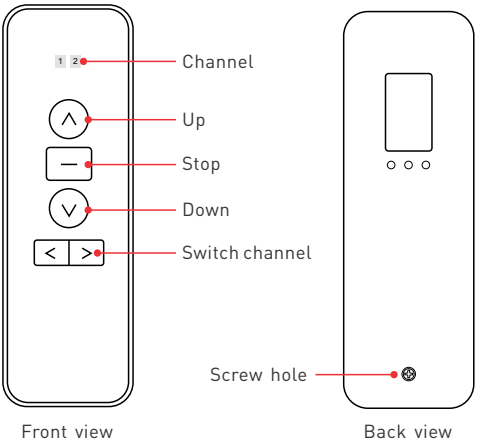
Install the Curtain Motor



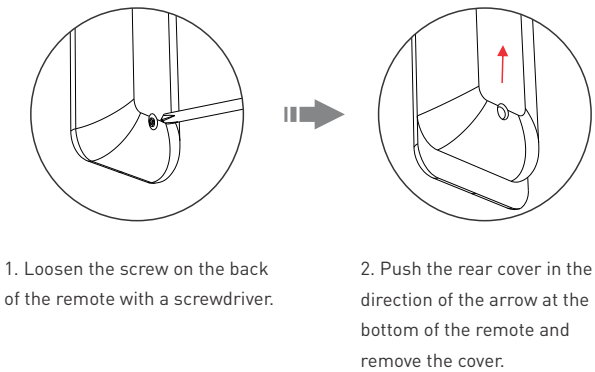
Remove the Curtain Motor



Description of Remote Buttons



Remove the Curtain Remote



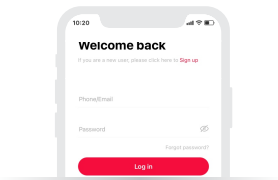
App Operating Instructions

1. Register your L-Home account

1.1 Scan the QR code below with you mobile phone and follow the prompts to complete the app installation.

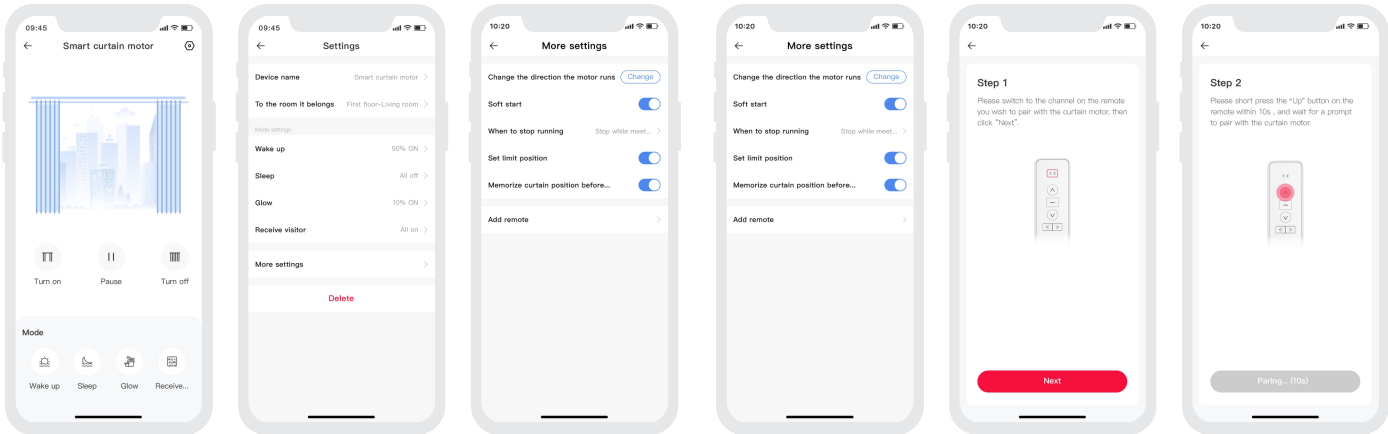


1.2 Open the App and log in or register your L-Home account.



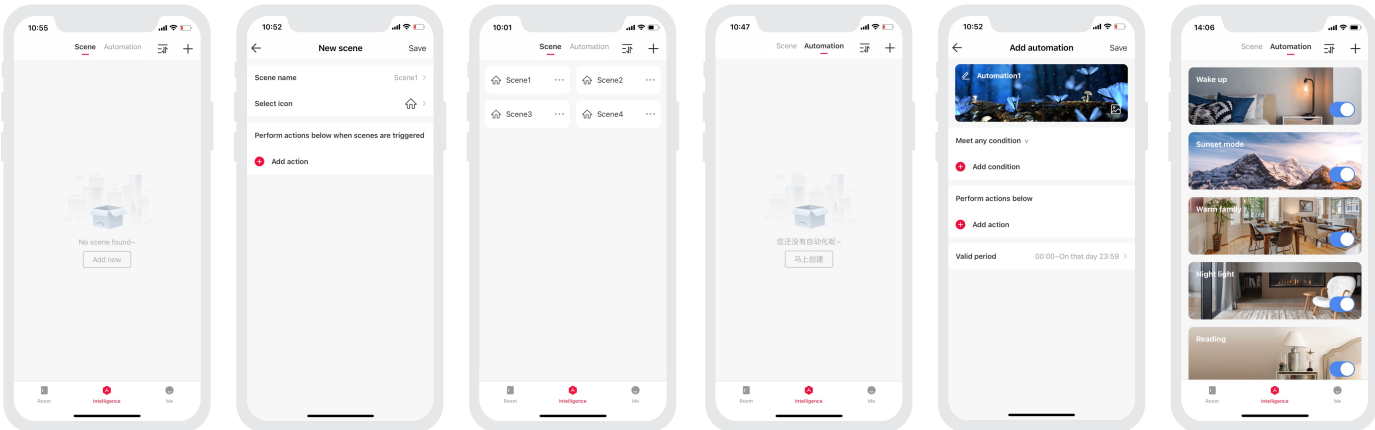
3. Control interface settings

After adding the curtain motor successfully, go to "Room" interface and click the curtain motor icon to access the control interface. You can tap TURN ON to open the curtain or TURN OFF to close it, or tap PAUSE to pause the the opening and closing progress, or control the curtain by drawing the icon curtains from left to right or vice versa. The app provides four modes and you're able to click "Settings" - "Mode Settings" to customize effects of these four modes. By clicking "Settings" - "More Settings", set the direction of motor rotation, soft start function, memorizing curtain position before power off and other functions.



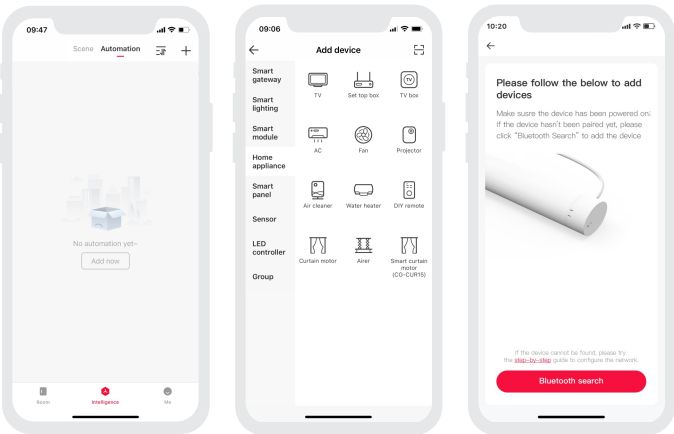
5. Scenes settings

Please add a gateway device to your home, such as Super Panel. Switch to [Intelligence] interface and click [+] icon in the upper right corner, then click [Add Action] to set the actions the curtain motor performs. You can set the curtain to fully open or fully close, or open the curtain at a designated percentage. After you complete the settings and click "Save", go back to [Intelligence] interface and click the scene you set to execute it and achieve remote control.



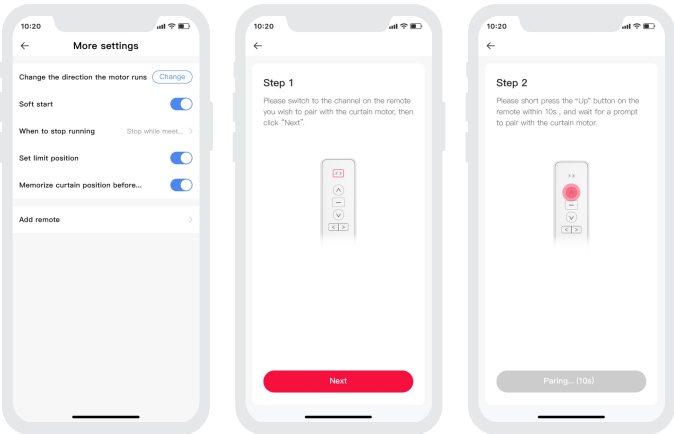
2. Pairing instructions

Create a home if you are a new user. Click "+" icon in the upper right corner to access the device list. Click [Home Appliance] and pick [Curtain Motor (CG-CUR15)] . Follow the prompts to power on the curtain motor first, then click [Bluetooth Search] .When the curtain motor is found, click [+] icon to add it.



4. Pair with the curtain remote

Go to [Settings] - [More Settings] . Click [Add Remote] and follow the on-screen instructions to switch to the channel on the remote you wish to pair with the curtain motor, then click [Next] . Within 10s, short press the "Up" Button on the remote , and wait for a prompt to pair with the curtain motor.



6. Automation settings

Please add a gateway device to your home, such as Super Panel. Switch to [Automation] interface and click [+] icon in the upper right corner to create automation. Click [Add Condition] to set the trigger conditions and click [Add Action] to select a mode, then set the curtain to fully open or fully close, or open the curtain at a designated percentage. You can also add other smart devices to link them with the motor together. After you complete the automation settings and click [Save] , when the conditions are met, a series of device actions will automatically perform.

Fault Treatment

Fault	Analysis	Solution
Curtain motor is running but the curtain doesn't move.	Check whether the curtain track is installed correctly.	Check and adjust the gap between the track gear and the belt.
Curtain moves automatically.	Curtain motor is mispaired with the other remote.	Remove the paired motor from the remote and pair again.
Curtain cannot be pulled.	1.Power is off suddenly when the motor is running. 2.Curtain is pulled in the wrong position that makes the pully get stuck in one position.	1.Pull the curtain in the opposite direction, then pull it back. 2.Pull the curtain in the middle position.

Attentions

- Products shall be installed by qualified professionals.
- LTECH products are non-waterproof (special models excepted).Please avoid the sun and rain. When installed outdoors, please ensure it is mounted in a water proof enclosure.
- Good heat dissipation will extend the working life of products. Please ensure good ventilation.
- Please check if the working voltage used complies with the parameter requirements of products.
- If a fault occurs, please do not attempt to fix products by yourself. If you have any question, please contact your suppliers.

✧ This manual is subject to changes without further notice. Product functions depend on the goods. Please feel free to contact our official distributors if you have any question.

Warranty Agreement

Warranty periods from the date of delivery : 2 years.  
Free repair or replacement services for quality problems are provided within warranty periods.

Warranty exclusions below:

- Beyond warranty periods.
- Any artificial damage caused by high voltage, overload, or improper operations.
- Products with severe physical damage.
- Damage caused by natural disasters and force majeure.
- Warranty labels and barcodes have been damaged.
- No any contract signed by LTECH.

1. Repair or replacement provided is the only remedy for customers. LTECH is not liable for any incidental or consequential damage unless it is within the law.
2. LTECH has the right to amend or adjust the terms of this warranty, and release in written form shall prevail.